



Lulu o kae?

Puku ye ke ya









Ngwana yo mongwe le yo mongwe ge a fetša mengwaga ye mehlano o swanetše go ba a na le dipuku tše lekgolo. Ka lebaka leo, Book Dash e kgoboketša baprofešenale ba go ba le boithamelolo ba go ithaopa go hlama dipuku tša dikanegelo tša seAfrika tše diswa tše di ka fetolelwago ke mang le mang mahala gomme tša phatlalatswa. Go hwetša tshedimošo ye ntši le go laolla dipuku tše di loketšwego go gatišwa tše di botse, etela bookdash.org.

Lulu o kae?

Diswantšho ka Clyde Beech

E ngwadilwe ke Mohale Mashigo

E akantšwe ke Nkosingiphile Mazibuko

E rulagantšwe ke Lisa Treffry-Goatley

ka thušo ya batšeakarolo ba Book Dash ka Cape Town ka di 14 Aporele 2018.

Phetolelo ka Mpho Masipa legatong la New Africa Books.

ISBN: 978-1-928497-20-2

This work is licensed under a Creative Commons Attribution 4.0 Licence (<http://creativecommons.org/licenses/by/4.0/>). You are free to share (copy and redistribute the material in any medium or format) and adapt (remix, transform, and build upon the material) this work for any purpose, even commercially. The licensor cannot revoke these freedoms as long as you follow the following license terms:

Attribution: You must give appropriate credit, provide a link to the license, and indicate if changes were made. You may do so in any reasonable manner, but not in any way that suggests the licensor endorses you or your use.

No additional restrictions: You may not apply legal terms or technological measures that legally restrict others from doing anything the license permits.

Notices: You do not have to comply with the license for elements of the material in the public domain or where your use is permitted by an applicable exception or limitation.

No warranties are given. The license may not give you all of the permissions necessary for your intended use. For example, other rights such as publicity, privacy, or moral rights may limit how you use the material.





Lulu o kae?



Clyde Beech Mohale Mashigo Nkosingiphile Mazibuko
Phetolo ya Sepedi ka Mpho Masipa





“Aowdowa!”







“Lulu! Ke nako ya go sepela,”
a realo Mma.






Lulu o kae?
O ka tlase ga sofa?
O ka morago ga garteine?







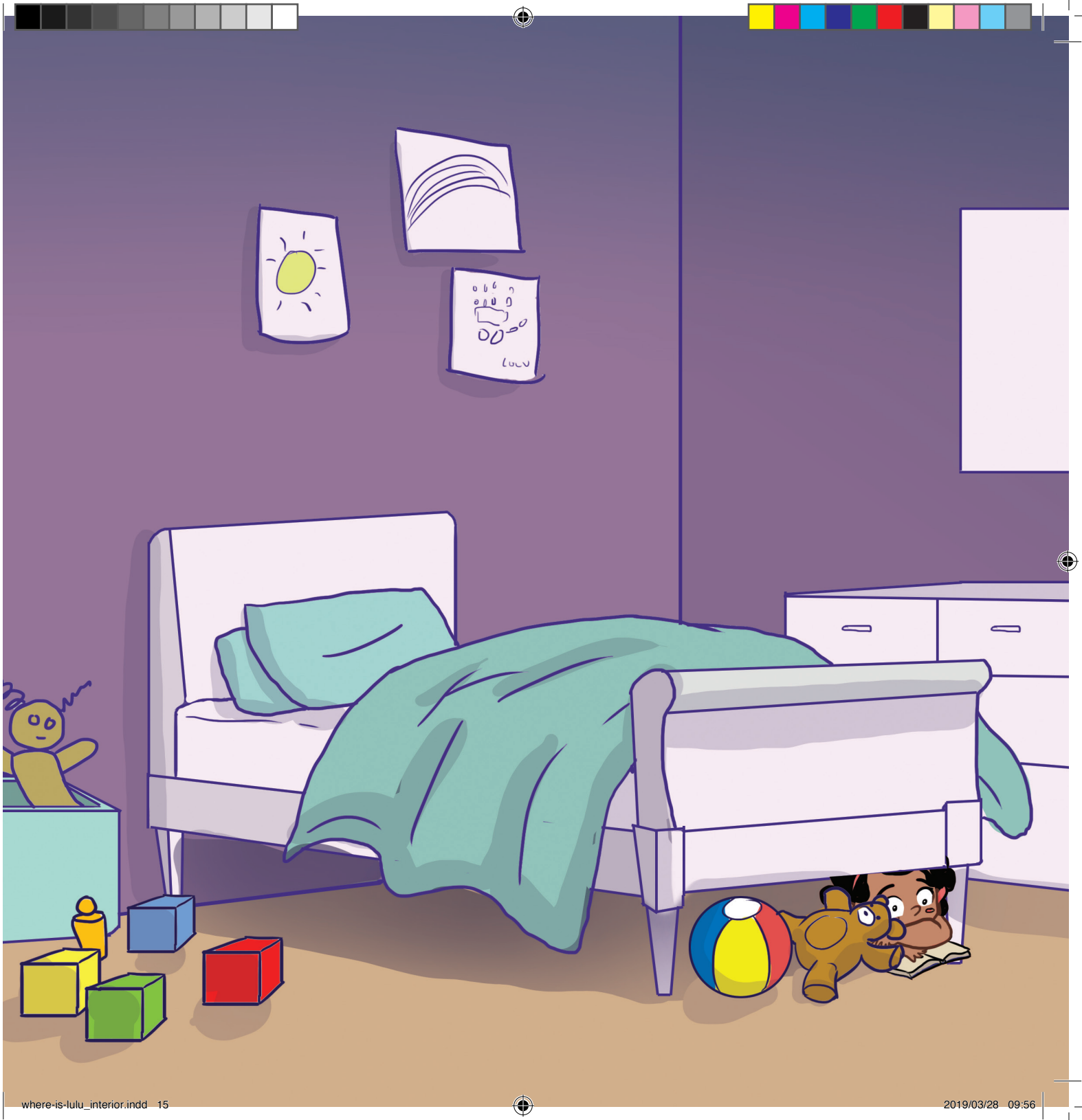
Lulu o kae?
O kgauswi le setofo?
O ka khapoteng?





“Lulu! Ke nako ya go sepela.
O mo kae?” a realo Mma.







“Agaa, o mo!”

“Ga ke nyake go sepeeela!”





“Re swanetše go sepela,”
a realo Mma.

“Efela ke **tloga** ke rata se!”











“Ke tloga ke rata se!”







“Le se.”



“Le se.”

“Le se.”





“Wa bona? O buša dipuku wa kgopela tše dingwe.”

“Iyee!”







Lulu o kae bjale?





